

# CHAMPIONNAT DE FRANCE MONOTYPES HABITABLES

GRAND PRIX  ÉCOLE NAVALE



## CHAMPIONNAT DE FRANCE DE VOILE

### MONOTYPES HABITABLES 2024

GRAND PRIX  ÉCOLE NAVALE

8 to 11 May 2024

### SAILING INSTRUCTIONS

**Including Amendment #1**

[www.aqpen.fr](http://www.aqpen.fr)



**AMENDMENT #1 CHANGES APPEAR IN RED**

**- SI 20 REPLACEMENT OF CREW OR EQUIPMENT**

**- SI 21 MEASUREMENT OR EQUIPMENT CONTROLS**

**- APPENDIX 3.5 – COURSE AREA D CAMARET AND CROZON MORGAT**

The notation [NP] in a rule means that a boat cannot protest (No protest) against another boat when infringing this rule. This changes RRS 60.1(a).

The notation [DP] in a rule means that the penalty for a breach of that rule may, at the discretion of the jury, be less than disqualification.

**1. RULES**

Rules applying are listed in NoR article 1.

Moreover, the rules of part 2 are replaced by the part B, section II of IRPCAS between sunset (9h30 PM for the event) and sunrise (7H00 AM for the event) legal time.

**2. CHANGES TO THE SAILING INSTRUCTIONS (SI)**

2.1 Any change to the SI will be posted no later than 2 hours before the warning signal of the race where it will take effect, except that any change to the schedule will be posted before 8h00 PM on the day before it will take effect.

2.2 Oral changes to the SI may be made on the water. In such a case, the race committee will display L flag on the race committee boat and will broadcast the change on the race VHF channel. A boat from the race committee or an umpire boat may inform each boat.

**3 COMMUNICATIONS WITH COMPETITORS**

3.1 Notices to competitors will be posted on the online notice board of the event website [www.agpen.fr](http://www.agpen.fr)

3.2 On the water, the race committee will normally monitor and communicate with the competitors on the VHF channels defined in SI 5.1.

**4. CODE OF CONDUCT**

4.1 [DP] [NP] Competitors and support persons shall comply with reasonable requests from race officials.

4.2 [DP] [NP] Competitors and support persons shall display the advertising provided by the OA in accordance with the operating instructions.

**5. SIGNALS MADE ASHORE AND VHF CHANNELS**

5.1 Signals made ashore are displayed on the flag poles located as follows:

5.1.1 Area A VHF 14 : Ecole Navale on the building « Albatros »

5.1.2 Area B VHF 69 : Ecole Navale near the launch slipway

5.1.3 Area C VHF 72(1W) : Brest : upstairs of Maison du Nautisme – room BBN

5.1.4 Area D VHF 74 Camaret : in centre Léo Lagrange, Tephany quay

5.1.5 Area E VHF 77 Crozon Morgat : Nautic Centre

5.1.6 Area F VHF 87 : Roscanvel : on the roof of Roscanvel Fort

5.2 When flag AP is displayed ashore, the warning signal will not be made:

- less than 1 hour after flag AP is removed for areas A, D, E and F

- less than 30 minutes after flag AP is removed for areas B and C.

This changes Race signals.

**6. SCHEDULE OF RACES**

6.1. To alert boats that a race or sequence of races will begin soon, the orange flag will be displayed with one sound at least five minutes before a warning signal is made.

6.2. The number of races scheduled and the time limit of the last warning signal of the last day of the event will be posted on the official notice board by 8h00 PM on Friday 10<sup>th</sup> of May.

6.3. Races are scheduled as detailed in Appendix 6

## 7 CLASS FLAGS

Each class flag is described in the table below. Allocation may be changed by amendment to the SI.

Areas	Classes	Class flags
A	J80 First seascape24	Insigna J80 Green flag
B	Waszp, Birdyfish	Insigna WASZP, Insigna Birdyfish
C	Mini J,	Insigna Mini J
D	Diam24 OD Figaro Beneteau Corsaire Muscadet	Insigna Diam24OD Insigna CFB Insigna Corsaire Insigna Muscadet
E	Open 5.70 Flying Fifteen	Insigna Open 5.70 Insigna Flying Fifteen
F	Open 500	Insigna Open 500

## 8 RACING AREAS

Racing areas location is described in Appendix 1 « Racing areas ».

## 9 THE COURSES

9.1 Courses are described in Appendix 3 « Courses », including the order in which marks are to be passed and the side on which each mark is to be left.

9.2 No later than the warning signal, the race committee will designate the course to be sailed and, if necessary, will indicate the approximate bearing and length of the first leg of the course

9.3 For coastal courses:

9.3.1 No later than the warning signal, the race committee will display “D” flag if the course includes an offset mark. It will display a green flag to indicate that it is to be passed or rounded to starboard. Absence of a green flag means that the offset mark is to be passed or rounded to port (this changes Race Signals).

9.3.2 Flag O displayed with repetitive sound signals near a mark to be rounded means: “after passing this mark, sail directly to the finishing line”.

9.3.3 Official ranking at a mark: The race committee may interrupt a race for any of the reasons mentioned in RRS 32.1 and validate the race using for the finishing order the last official ranking at one of the marks to be rounded mentioned in Appendix 3 « Courses » (this changes RRS 32). Arrangements are detailed in Appendix « Official ranking at a mark ».

## 10 MARKS

10.1 Racing area allocation of the marks

	Area A	Area B	Area C	Area D	Area E	Area F
	Ecole Navale	Ecole Navale	Brest	Camaret	Crozon	Roscanvel
Start	Pin end boat or White	Yellow	Yellow	Pin end boat or Orange	Pin end boat or Orange	Yellow
Course and offset	Orange	Yellow (Mark 1 Green Birdyfish)	White	Orange (Mark 1 green for courses 1 & 2)	Green	White
Change of course	Green	Orange	Green	Red BBN	Yellow	Orange
Finish	White	White	Red BBN	White	White	Green

10.2 A race committee boat signaling a change of a leg of the course is a mark.

10.3 Except at a gate, boats shall leave marks on port. If one of the marks of a gate is missing, the remaining mark shall be rounded on port.

## 11 AREAS THAT ARE OBSTRUCTIONS

Areas considered as obstructions are specified in Appendix 5 « Forbidden areas ».

## 12 THE START

- 12.1 The starting line will be between the mast displaying an orange flag on the race committee boat at the starboard end and the mast displaying an orange flag on a race committee boat or the course side of the port end starting mark.
- 12.2 [DP] [NP] Waiting boats: Boats whose warning signal has not been given must avoid the starting area while other boats are in starting procedure.
- 12.3 If any part of a boat's hull is on the course side of the starting line at her starting signal and she is identified, the race committee may give her sail number on VHF channel of the race. The absence of VHF transmission or reception will not be grounds for redress (this changes RRS 62.1(a)).
- 12.4 A boat that does not start within 4 minutes after her starting signal will be scored Did Not Start without a hearing. This changes RRS A5.1 and A5.2.

## 13 CHANGE OF THE NEXT LEG OF THE COURSE

- 13.1 To change the next leg of the course, the race committee will lay a new mark (or move the finishing line) and remove the original mark as soon as practicable.
- 13.2 For all areas: When a change of course is made at gate 3, mark 1 only will be relaid (mark 2 will be deleted). When a change of course is made at gate 2, gate 3 will be deleted and replaced by one mark to be left on port.
- 13.3 When in a subsequent change a new mark is replaced, it will be replaced by an original mark.
- 13.4 Except at a gate, boats shall pass between the race committee boat signaling the change of the next leg and the nearby mark, leaving the mark to port and the race committee boat to starboard. This changes RRS 28.1.

## 14 THE FINISH

- 14.1 The finishing line will be between a mast displaying a blue flag on the race committee boat and the course side of the finishing mark.
- 14.2 **Only for the Wazsp:**
- 14.2.1 When the first boat crosses the finishing line after having sailed the course, the race committee will immediately display a yellow flag with one sound signal on the race committee boat and on the committee boat stationed at leeward gate. Blue and Yellow flags will be lowered at the end of the finishing window or when the last boat finished.
- 14.2.2 When the first boat crosses the finishing line after having sailed the course, all boats finishing the course in time will be considered as having finished, independently of the number of laps they sailed.
- 14.2.3 Their position in the race will be established from the finishing order and the number of laps sailed.  
Boats having sailed 3 laps will be ranked before those having sailed 2 laps.  
Boats having sailed 2 laps will be ranked before those having sailed 1 lap.  
Boats having sailed 1 lap will be ranked before those having sailed 0 lap.  
Boats failing to cross the finishing line before its cut-off will be ranked according to their last rounding of windward mark.  
Boats failing to round once windward marks will be scored DNF.  
Final ranking will be established by comparing the finishing order and the number of windward passages.
- 14.2.4 [DP] Wazsp having finished and cleared the finishing line shall clear the finishing area.

## 15 PENALTY SYSTEM

- 15.1 For all classes, RRS 44.1 is changed so that the Two-Turns Penalty is replaced by a One-Turn Penalty.
- 15.2 Jury actions afloat:  
For A, C and E areas, operating methods are detailed in Appendix 2 of the SIs "Semi-direct judging"

## 16 TIME LIMITS

- 16.1 For coastal courses and speed crossing: no time limit for the first boat to finish. Boats not finishing within a window of 3 minutes per nautical mile (length mentioned in the course to be sailed) with a minimum of 60 minutes after the first boat having sailed the course and finished are scored DNF. This changes RRS 35, A4 and A5.
- 16.2 Upwind-downing courses:
- 16.2.1 The time limit for the first boat to finish is:
- 40 minutes for area B
  - 60 minutes for area C

- 90 minutes for areas A, D, E et F

For Waszp and Birdyfish, target time is 20 minutes and time limit for finishing is 10 minutes after the first boat of the class.

For other classes, boats failing to finish within 30 minutes after the first boat having sailed the course and finished will be scored DNF. This changes RRS 35, A4 and A5.

## 17 HEARING REQUESTS

17.1 For each class, the protest time limit is 60 minutes after the last boat has finished the last race of the day or the race committee signals no more racing today, whichever is later.

17.2 Hearing request forms are available from the jury office located:

- Areas A and B Ecole Navale Lanvéoc Poulmic : in Bâtiment Ailée
- Area C in Brest : in Port du Moulin Blanc, room Cormorandière
- Area D in Camaret : race committee
- Area E in Crozon : Centre Nautique de Crozon
- Area F in Roscanvel : race committee

17.3 Notices will be posted at following address

<https://jurydecisions.ffvoile.fr/events/GPEN%20%20CF%20Monotypes%20Habitable%202024>

no later than 30 minutes after the protest time limit to inform competitors of hearings in which they are parties or named as witnesses

Hearings will be held in the jury room, located

- at Ecole Navale Lanvéoc Poulmic : in bâtiment Ailée, for areas A, B, D and F
- in Brest – Port du Moulin Blanc : room Cormorandière for area C
- in Crozon – Centre Nautique, for area E.

## 18 SCORING

18.1 3 races are required to be completed to complete a series.

18.2 For all classes

- (a) When fewer than 3 races have been completed, a boat's series score will be the total of her race scores.
- (b) When 3 or more races have been completed, a boat's series score will be the total of her race scores excluding her worst score.

18.3 For Diam24 OD, Waszp and Birdyfish, when 9 or more races have been completed, a boat's series score will be the total of her race scores excluding her two worst scores

18.4 For the national championship of the "Fédération des Clubs de la Défense", the winner will be calculated in accordance with the NOR, using the overall J80 ranking, without recalculating the scores.

18.5 For the Master J80 UNSS, the winner will be calculated in accordance with the NOR, using the overall J80 ranking, without recalculating the scores.

## 19 SAFETY RULES

19.1 [DP] [NP] A boat that retires from a race shall notify the race committee at the first reasonable opportunity

19.2 For all classes, a PFD shall be worn at all time afloat.

19.3 **Bowsprit use:**

Unless otherwise specified in the class rules, the bowsprit may be extended only to set and carry the spinnaker.

19.4 **For Waszp and Birdyfish :**

For Waszp, helmet is compulsory (and highly recommended for Birdyfish) at all time afloat.

These equipments may be briefly removed between races to change or adjust clothing or personal equipment.

## 20 REPLACEMENT OF CREW OR EQUIPMENT

20.1 [DP] Substitution of competitors is not allowed without prior written approval of the race committee.

20.2 [DP] (i) For Diam 24OD: crew list shall be lodged daily by 9h00 AM.

[DP] (ii) For Figaro Beneteau: the crew list(s) of the day shall be lodged daily by 9h00 AM.

- one change in the crew is authorised during the day
- these changes shall be executed by the crews themselves
- these changes shall not interfere with the schedule and the conduct of the races decided by the race committee
- crews changing their composition during the day shall inform the race committee as soon as this change has been done.

20.3 [DP] Substitution of damaged or lost equipment is not allowed unless authorized in writing by the technical committee or the race committee. Requests for substitution shall be made to the committee at the first reasonable opportunity.

## 21 MEASUREMENT OR EQUIPMENT CONTROLS

21.1 A boat or her equipment may be controlled at any time for compliance with the class rules and SIs.

21.2 [DP] On the water, a member of the technical committee may ask a boat to sail immediately to a given area for inspection.

21.3 [DP] A boat shall comply with the rules 75 minutes before her first warning signal of the day.

### 21.4 Penalties without hearing by the technical committee

- failure to show the equipment to be marked : 1 point for each race involved

- incomplete weighing of the crew (according to the classes): 1 point for each race involved

This changes RRS 63.1

## 22 ADVERTISING

[DP] [NP] Except for the Flying Fifteen, each boat shall affix on each side in the fore 25% of the hull the advertising provided by the OA during registration. It is the responsibility of the crew to fixing and care about these markings, to be changed if necessary.

[DP] [NP] For Flying Fifteen, during the whole event, (in port or afloat), boats shall display the race flag "Grand Prix de l'Ecole Navale" provided by the organising authority. The flag will be provided during registration, by paying a deposit of 20€ which will be refunded at the end of the event upon the return of the flag.

## 23 OFFICIAL VESSELS

Official vessels will be identified with a flag GPEN.

Jury boats: yellow flag with « JURY »

Technical committee: blue flag with « JAUGE »

## 24 SUPPORT PERSONS

24.1 [DP] [NP] Support persons shall stay outside the areas where boats are racing from the time of the preparatory signal for the first start until all boats have finished or retired or the race committee signals a postponement, general recall or abandonment.

24.2 [DP] [NP] Support vessels will be identified with a sticker GPEN affixed on the engine cover.

24.3 The regulation of the conditions applying on coaches' actions during competitions will apply.

24.4 [DP] [NP] Support boats shall have onboard:

- Personal Flotation Device (mini 50N) permanently worn by all persons on board
- A VHF
- A knife
- An anchor and a suitable mooring line
- a towing floating rope 10mm diameter and 15 meters long
- A kill cord system in case of a fall, which shall be attached to the pilot as long as the engine is on (notably in accordance with Division 240).

Pilots of support boats shall comply with any request made by the race officials or by the representatives of organizing authority, particularly those requests regarding assistance.

Support boats shall comply with local navigation rules applying, particularly respecting the speed limits within the various areas.

## 25 BERTHING

[DP] Boats shall be kept in their assigned places while in parking or port.

## 26 HAUL-OUT RESTRICTIONS

[DP] [NP] For areas A, C, D (except Diam24 OD), E and F, boats shall not be hauled out during the regatta except with and according to the terms of prior written permission of the race committee or technical committee.

## 27 DIVING EQUIPMENTS AND PLASTIC POOLS

[DP] [NP] Their use will be linked to local regulations (port area, etc.).

## 28 PRIZES

Prizes will be given as follows:

- Medals for the 3 first of each class competing for a title of French Champion
- Prizes for the 3 first of each class competing for the Grand Prix de l'Ecole Navale
- The winner of the National sailing Championship of « Fédération des Clubs de la Défense (J80) »
- The winner of the Master J80 UNSS

### ORGANIZATION

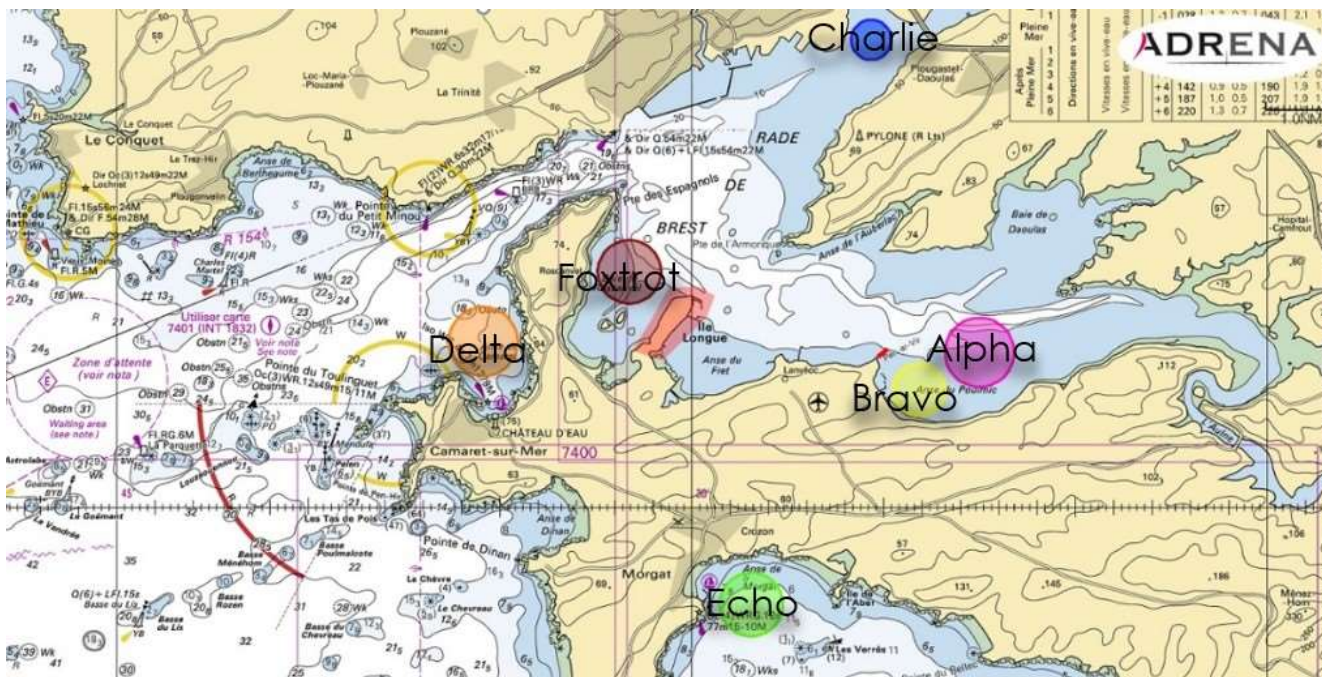
Bruno DEMEOCQ, Chief Commissioner  
Bernard BOCQUET, FFVoile Delegate  
Alain DAOULAS, Nautical Commissioner  
Marc BOUVET, FFVoile technical delegate

### DESIGNATED RACE OFFICIALS

Christophe GAUMONT, race Director  
Jean-Christophe COUR, chairman race committee area A  
Françoise DETTLING, chairwoman race committee area B  
Christian LEAUSTIC, chairman race committee area C  
Patrick VILLETTE, chairman race committee area D  
Eric BOURNOT, chairman race committee area E  
Hervé DESPRES, chairman race committee area F  
Frédérique PFEIFFER, chairwoman technical committee  
Aline WILLIOT, technical committee area C  
Bertrand CALVARIN, jury chairman  
Anaïs BONNANESSE, chairwoman jury panel area C  
Corinne AULNETTE, chairwoman jury panel area E

## APPENDIX 1 – RACING AREAS

Areas	Diameter	Position
<b>Area A - Ecole Navale - Pink</b>	<b>1,2 NM</b>	48°17,890 N 004°21,630 W
<b>Area B - Ecole Navale - Yellow</b>	<b>1,0 NM</b>	48°17,040 N 004°24,090 W
<b>Area C – Brest - Blue</b>	<b>0,7 NM</b>	48°23,120 N 004°25,340 W
<b>Area D Camaret &amp; Mer d'Iroise - Orange</b>	<b>1,2 NM</b>	48°17,880 N 004°35,460 W
<b>Area E – Crozon Morgat - Green</b>	<b>1,2 NM</b>	48°13,310 N 004°28,470 W
<b>Area F - Roscanvel - Brown</b>	<b>1,1 NM</b>	48°19,095 N 004°31,650 W



## APPENDIX 2 - SEMI-DIRECT JUDGING

Version 5: March 2023

The rules in this Appendix amend RRS 44.1, 60.1, 62.1, 63.1, 64.1, 66, 70 and only RRS P5 applies.

- SD1 RRS 44.1 is amended so that the Two-Turns Penalty is replaced by the One-Turn Penalty.
- SD2 If a boat is involved in an incident where a rule of Part 2 is broken, or if she sees a breach of RRS 31 or 42, that boat may protest:
- by hailing "Protest" and
  - by conspicuously displaying a red flag at the first reasonable opportunity (unnecessary when the hull length of the protestor boat is less than 6 meters).
- If the boat that has broken a rule does not take a penalty in accordance with RRS 44.2, the jury may penalize her by signalling:
- by a whistle,
  - by pointing a red flag at her, and
  - by designating her.
- The designated boat shall then take a penalty in accordance with SD1 and RRS 44.2.

If the jury is satisfied that no rule has been broken, he may display a green flag.

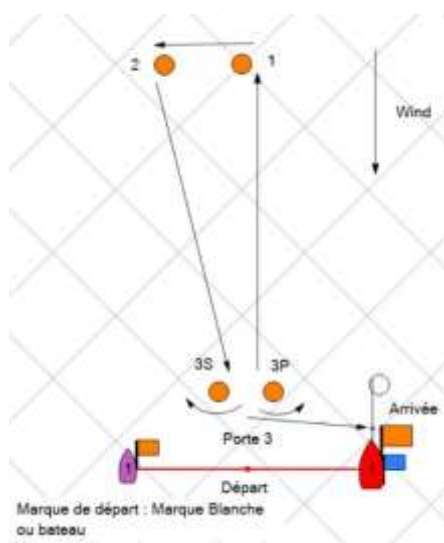
- SD3 When a boat breaks:
- a SI or class rule governing the use of the bowsprit, or
  - RRS 31, or
  - RRS 49 or a class rule governing the position of the crew, or
  - RRS 42, amended in accordance with RRS P5 if the class rules so provide,
- the jury may penalize her and signal the penalty with a whistle, pointing a red flag at her and designating her. The designated boat shall then take a penalty in accordance with SD1 and RRS 44.2.
- SD4 If the designated boat
- fails to take a penalty, or
  - does not take it correctly, or
  - gains an advantage despite a penalty taken,
- the jury may impose one or more penalty turns to be completed according to RRS 44.2 or protest this boat according to RRS 60.3.



- SD5 When an incident has been judged on the water, the same incident cannot subsequently be grounds for a protest or request for redress, except
- according to SD 4, or
  - under RRS 60.3 if the jury finds that RRS 2 is also likely to have been broken or under RRS 62.1(b) if an action of the penalized boat injury or physical damage or
  - under RRS 62.1(d) if RRS 2 has been broken.
- A decision or action of the jury may not be grounds for a request for redress, reopening or appeal.
- SD6 Jury boats can be positioned at any point in the race area. Their position cannot be grounds for a request for redress from a boat (this amends RRS 62.1(a)).
- SD7 The normal protest procedure is still applicable for those incidents that did not induce an action by the jury on the water that penalized the boat breaking a rule.

## APPENDIX 3.1 - COURSE AREA A - ECOLE NAVALE - J 80 - FIRST SEASCAPE

For the colour of the buoys, see SI 10.1



marks 1 & 2 are to be left on port. Mark 3 is whether a gate with 2 marks 3S/3P, or a mark 3B to be left on port.

### **Course 2 laps (Numerical pennant N°1)**

Start – 1 – 2 – 3S/3P – 1 – 2 – 3P - Finish

### **Course 3 laps (Numerical pennant N°2)**

Start – 1 – 2 – 3S/3P – 1 – 2 – 3S/3P – 1 – 2 – 3P - Finish



### **Course Virginie Hériot (Yellow flag + possibly Numerical pennant N°3) + Flag GPEN**

If flag GPEN is displayed with signals indicating the course to be sailed, the position of the finishing line is shifted.

**It will be shifted and will be between a white buoy to be left on port and a mast ashore displaying a blue flag, in front of the Ecole Navale chapel.**

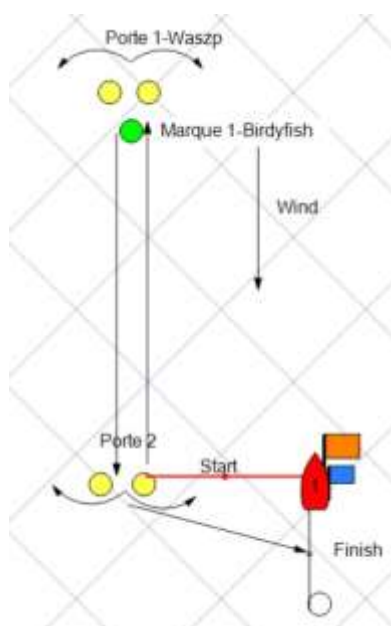
- **Course Virginie Hériot 2 laps (Yellow flag + flag GPEN) :** Start - 1 – 2 - 3S/3P – 1 - 2, 3S/3P - finish
- **Course Virginie Hériot 3 laps (Yellow flag + numerical pennant N°3 + flag GPEN) :** Start – 1 – 2 - 3S/3P – 1 – 2 – 3S/3P – 1 – 2 - 3S/3P - finish

**Note :** when a change of course is made at one of the marks of gate 3, mark 1 only will be relaid (mark 2 will be removed)

When a change of course is made at mark 1 or 2, gate 3 will be replaced by mark 3P only, to be left on port

## APPENDIX 3.2 – COURSE AREA B - ECOLE NAVALE - WASZP & BIRDYFISH

For the colour of the buoys, see SI 10.1



### WASZP

**Course 1 : Numerical pennant n°1 :** Start – Gate 1S/1P – 2P – finish

**Course 2 : Numerical pennant n°2 :** Start – Gate 1S/1P – Gate 2S/2P – Gate 1S/1P – 2P – Finish

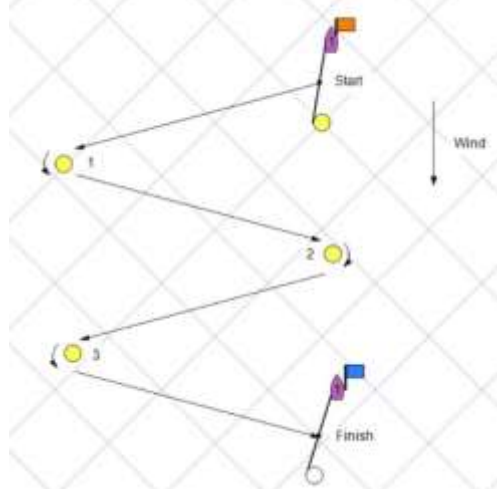
### BIRDYFISH

**Course 1 : Numerical pennant n°1 :** start – green mark 1 – gate 2S/2P – finish

**Course 2 : Numerical pennant n°2 :** start – green mark 1 – gate 2S/2P – green mark 1 - 2P – finish

Marks 1 & 2 are gates for the Waszp

Green mark 1 is to be left on port and mark 2 is a gate for the Birdyfish.

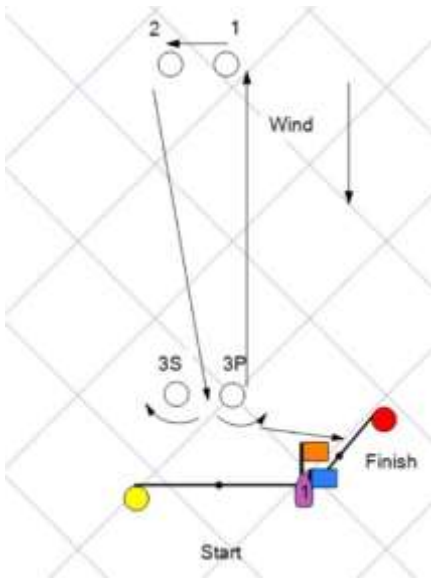


### Course 3 : Numerical pennant n°3 :

start – Mark 1(port)– Mark 2 (starb) Mark 3 (port) – finish

### APPENDIX 3.3 – COURSE AREA C – BREST- MINIJ

For the colour of the buoys, see SI 10.1



*Marks 1 & 2 are to be left on port. Marks 3S and 3P are a gate*

#### **Course 1 lap (Numerical pennant N°1)**

start – 1 – 2 – 3P - finish

#### **Course 2 laps (Numerical pennant N° 2)**

Start, 1 – 2 – 3S/3P - 1 - 2 – 3P - finish

#### **Course 3 laps (Numerical pennant N°3)**

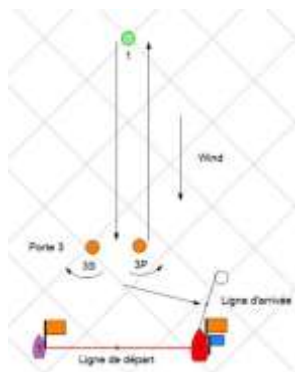
start, 1 – 2 – 3S/3P - 1 - 2 – 3S/3P – 1 – 2 -3P - finish

**Note :** when a change of course is made at one of the marks of gate 3, mark 1 only will be relaid (mark 2 will be removed)

When a change of course is made at mark 1 or 2, gate 3 will be replaced by mark 3P only, to be left on port

**APPENDIX 3.4 – COURSE AREA D - CAMARET**  
**FIGARO BENETEAU 3 - DIAM 240D – CORSAIRE - MUSCADET**

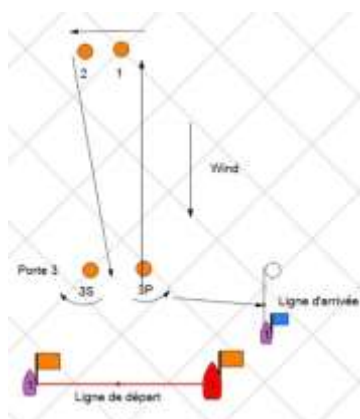
For the colour of the buoys, see SI 10.1



**Course 1 (Numerical pennant N°1)** Start, 1 – 3S/3P – 1 – 3P - finish

**Course 2 (Numerical pennant N°2)** Start, 1 – 3S/3P – 1 – 3S/3P – 1 – 3P – finish

**Mark 1 is green and to be left on port**



**Course 3 (Numerical pennant n°3)** : start – 1 - 2 –3P – finish

**Course 4 (Numerical pennant n°4)** : start – 1 – 2 – 3S/3P - 1 – 2 – 3P – finish

**Note for courses 3 & 4:** when a change of course is made at one of the marks of gate 3, mark 1 only will be relaid (mark 2 will be removed)

When a change of course is made at mark 1 or 2, gate 3 will be replaced by mark 3P only, to be left on port

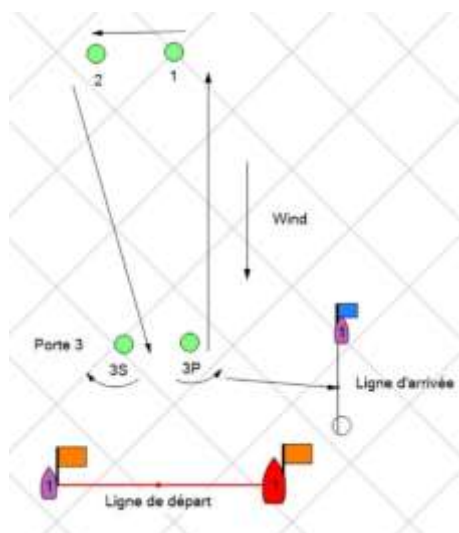
**Course Virginie Hériot (Yellow flag + Numerical pennant) + flag GPEN**



If flag GPEN is displayed with signals showing the course to be sailed, the finishing line position is shifted.

**It will be shifted and located approximately at 1NM in the south and will be laid in W of the North breakwater of Camaret harbour**

## APPENDIX 3.5 – COURSE AREA E – CROZON MORGAT – OPEN 570 - FLYING FIFTEEN



Marks 1 & 2 are to be left on port. Mark 3 is whether a gate with 2 marks 3S/3P, or a mark 3P to be left on port.

### **Course 2 laps (Numerical pennant N°1)**

start – 1 – 2 - 3S/3P – 1 – 2 - 3P - finish

### **Course 3 laps (Numerical pennant N°2)**

start – 1 – 2 - 3S/3P – 1 – 2 - 3S/3P – 1 – 2 - 3P - finish



### **Course Virginie Hériot (Yellow flag + Numerical pennant N°3) + flag GPEN**

If flag GPEN is displayed with signals showing the course to be sailed, the position of the finishing line is shifted.

**It will be shifted and located approximately 200 m in the East of the first port lateral mark of the harbour channel of Morgat.**

- **Course Virginie Hériot 2 laps (yellow flag + flag GPEN) :**  
start, 1, 2, 3S/3P, 1, 2, 3S/3P, finish
- **Course Virginie Hériot 3 laps (yellow flag + Numerical pennant N°3 + flag GPEN) :** start, 1, 2, 3S/3P, 1, 2, 3S/3P, 1, 2, 3S/3P, finish

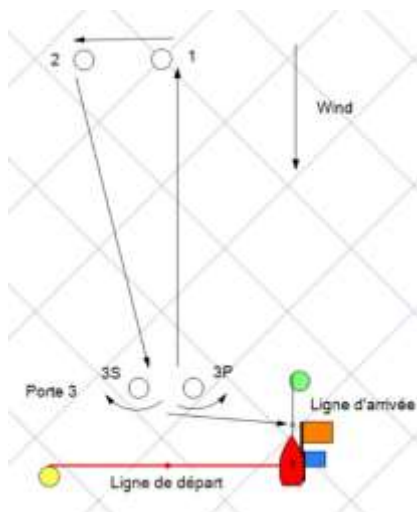
**Note :** when a change of course is made at one of the marks of gate 3, mark 1 only will be relaid (mark 2 will be removed)

When a change of course is made at mark 1 or 2, gate 3 will be replaced by mark 3P only, to be left on port

## APPENDIX 3.6 – COURSE AREA ZONE F – ROSCANVEL – OPEN 500

For the colour of the buoys, see SI 10.1

marks 1 & 2 are to be left on port. Mark 3 is whether a gate with 2 marks 3S/3P, or a mark 3P to be left on port.



### **Course 2 laps (Numerical pennant N°1)**

start – 1 – 2 – 3S/3P – 1 – 2 – 3P, finish

### **Course 3 laps (Numerical pennant N°2)**

start – 1 – 2 – 3S/3P – 1 – 2 – 3S/3P – 1 – 2 – 3P -finish

Starting mark : white buoy or boat

**Note :** when a change of course is made at one of the marks of gate 3, mark 1 only will be relaid (mark 2 will be removed)

When a change of course is made at mark 1 or 2, gate 3 will be replaced by mark 3P only, to be left on port

## APPENDIX 4 - OFFICIAL RANKING AT A MARK

### COASTAL COURSES AND SPEED CROSSING

The race committee may interrupt a race for any of the reasons mentioned in RRS 32.1 and validate the race using for the finishing order the last official ranking at one of the marks to be rounded mentioned in Appendix 3 Courses (this changes RRS 32).

- A4.1** If a race committee boat displaying the 2<sup>nd</sup> substitute (this changes Race signals) is nearby one of the marks identified with an asterisk, the mark and the race committee boat are a gate where an official ranking of the boats will be made. Boats shall sail through the gate and continue racing.
- A4.2** If the race committee thereafter decides to interrupt the race, he will display flags S over H with two sound signals (this changes Race signals) meaning: "the race is interrupted, and the last official ranking will be used for the finishing order." If possible, the race committee will confirm these arrangements by VHF.
- A.4.3** Any incident, possibly resulting in a protest, occurred after this official ranking will not be taken in account and no boat shall be penalized, except if she breaks RRS 14 when the incident caused injury or serious damage, or under RRS 69.
- A4.4** Marks where an official ranking may be established are identified with an asterisk (\*) in the description of coastal courses and speed crossing.

## APPENDIX 5 – FORBIDDEN AREAS

### Forbidden areas



**Ile Longue : It is strictly forbidden to sail around « Ile longue » in the area marked with specific buoys numbered from 0 to 10.**



**Pen Ar Vir : For all courses, it is strictly forbidden to sail between the cardinal mark Pen Ar Vir and the head with same name**



## Appendix 6 - Schedule for each venue

VENUE	Areas & Classes	Wednesday 8 May	Thursday 9 May	Friday 10 May	Saturday 11 May	Sunday 12 May
<b>ECOLE NAVALE</b>	<u>Area A</u>  <i>J80 Seascape 24</i>	<b>08h30-19h00</b> Craning & Launching  <b>10h00-19h00</b> Welcome	<b>8h30-12h30</b> Welcome Craning & Launching  <b>14h30</b> 1st warning signal  <b>19h30</b> Competitors dinner Ecole navale	<b>07h45-09h15</b> Competitors breakfast  <b>10h45</b> 1st warning signal  <b>19h30</b> Competitors dinner Espace Nautique Lanvéoc	<b>07h45-09h15</b> Competitors breakfast  <b>10h30</b> 1st warning signal  <b>From 16h30</b> Craning  <b>19h30</b> Prize giving at Ecole Navale  <b>20h30</b> Competitors dinner Ecole navale	<b>08h30</b> Craning Hauling out
<b>ECOLE NAVALE</b>	*****  <u>Area B</u>  <i>Waszp Birdyfish</i>					

VENUE, racing area & class	Tuesday 7 May	Wednesday 8 May	Thursday 9 May	Friday 10 May	Saturday 11 May	Sunday 12 May
<b>BREST</b>  <b>Area C</b>  <b>Mini J</b>	<b>14h00-19h00</b> Launching Welcome	<b>08h30-12h30</b> Launching Welcome  <b>14h30</b> 1st warning signal  <b>19h30</b> Opening ceremony cocktail-dinner	<b>08h30-11h00</b> Welcome coffee  <b>15h30</b> 1st warning signal  <b>19h30</b> Regional leagues dinner	<b>09h00-10h30</b> Welcome coffee  <b>15h30</b> 1st warning signal  <b>19h30</b> Competitors dinner - concert	<b>08h15 - 09h00</b> Welcome coffee  <b>10h00</b> 1st warning signal  <b>From 13h00</b> Hauling out  <b>18h00</b> Departure of competitors towards Ecole navale  <b>19h30</b> Prize giving at Ecole navale  <b>20h30</b> Competitors dinner at Ecole navale <b>22h30</b> Return to Brest	<b>08h30</b> Hauling out

VENUE	Racing area & Classes	Wednesday 8 May	Thursday 9 May	Friday 10 May	Saturday 11 May	Sunday 12 May
<b>CAMARET</b>	<u>Area D</u> <i>Figaro Beneteau 3 Corsaire Muscadet Diam 24OD</i>	08h30-19h00 Craning Launching  10h00-19h00 Welcome	8h30-12h00 Craning Launching  Welcome  12h00 Briefing in the Centre nautique  14h00 1st warning signal  19h30 Competitors dinner Camaret	08h00-09h15 Welcome coffee  10h45 1st warning signal  19h30 Competitors dinner Camaret	07h45-08h45 Welcome coffee  10h30 1st warning signal  From 16h30 Craning  19h30 Prize giving at Ecole navale  20h30 Competitors dinner at Ecole navale	08h30 Craning Hauling out

VENUE	Racing area & Classes	Wednesday 8 May	Thursday 9 May	Friday 10 May	Saturday 11 May	Sunday 12 May
<b>CROZON MORGAT</b>	<u>Area E</u> <i>Open 570 Flying Fifteen</i>	08h30-19h00 Craning Launching  10h00-19h00 Welcome	8h30-12h00 Craning Launching  Welcome  12h00 Briefing in centre nautique  14h00 1st warning signal  19h30 Competitors dinner Crozon	08h00-09h15 Welcome coffee  10h45 1st warning signal  19h30 Competitors dinner Crozon	07h45-08h45 Welcome coffee  10h30 1st warning signal  From 16h30 Craning  19h30 Prize giving at Ecole navale  20h30 Competitors dinner at Ecole navale	08h30 Craning Hauling out

VENUE	Racing area & Class	Wednesday 8 May	Thursday 9 May	Friday 10 May	Saturday 11 May	Sunday 12 May
ROSCANVEL	<u>Area F</u> <i>Open 500</i>	<b>08h30-19h00</b> Launching  <b>14h00-19h00</b> Welcome	<b>09h00-12h00</b> Launching Welcome  <b>14h00</b> 1st warning signal  <b>19h30</b> Competitors dinner Roscanvel	<b>09h00-10h00</b> Welcome coffee  <b>10h30</b> 1st warning signal  <b>19h30</b> Competitors dinner Espace Nautique Lanvéoc	<b>09h00-10h00</b> Welcome coffee  <b>10h30</b> 1st warning signal  <b>From 16h30</b> Hauling out  <b>19h30</b> Prize giving at Ecole navale  <b>20h30</b> Competitors dinner at Ecole navale	Hauling out